

CANTOR+NISSEL

4F Design

A high quality RGP lens for Daily Wear


FEATURES

- balanced periphery
- optimum edge lift throughout range of parameters

BENEFITS

- available in a range of fluorocarbon materials
- choice of tints
- comprehensive range of lens dimensions

Product Specification

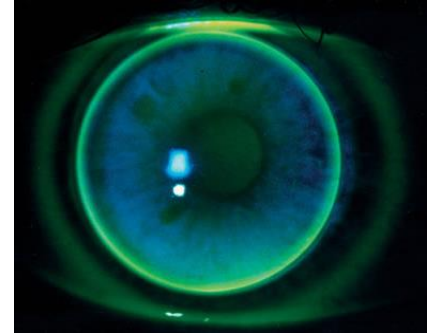
		Focon III 2 F2 _{Low}	Focon III 3 F2 _{Mid}	Focon III 4 F2 _{High}
Material				
Refractive Index		1.460	1.450	1.440
Permeability (Dk)		28 x 10 ⁻¹¹	50 x 10 ⁻¹¹	100 x 10 ⁻¹¹
Wetting Angle		19°	19°	21°
Tints		Blue Grey Green (trial) Clear	Blue Grey Green Clear	Blue - Green Clear
Base Curve (mm)			7.05, 7.12, 7.20, 7.27 7.35, 7.42, 7.50, 7.57 7.65, 7.72, 7.80, 7.87 7.95, 8.02, 8.10, 8.17 8.25, 8.32, 8.40, 8.47	
Diameter (mm)			8.60, 9.00, 9.40 9.80, 10.20, 10.60	
Power Range			-40.00D to +40.00D (0.25D steps)	

FITTING PROCEDURE

- Full refraction and eye examination
- Keratometry readings
- For a spherical / near spherical cornea fit on flattest 'K'.
Adjustments should be made according to toricity of the cornea.
- Power should be ordered as Best Vision Sphere, making necessary adjustments if lens has been steepened / flattened in relation to flattest 'K'
- Instil fluorescein to check fitting

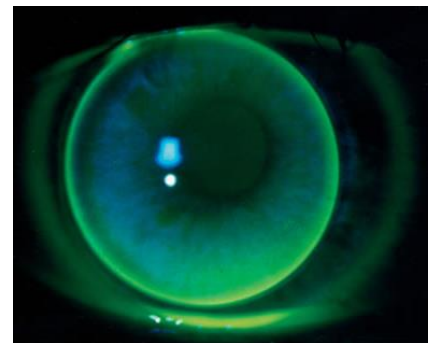
Alignment / Good Fit

- Central position – lens periphery should not extend beyond limbal area
- Smooth movement – lid lifts lens with blink, lens then falls slowly
- Good vision
- Central and mid-peripheral alignment
- Good edge clearance (approx. 0.40mm wide)



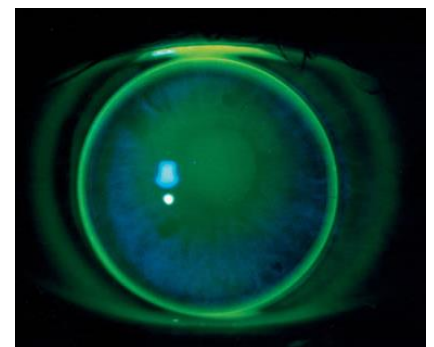
Loose / Flat Fit

- Excessive and rapid movement upon blink
- Arcuate drooping between blinks
- Lens is unstable and decentres
- If lens drops may show inferior arcuate pooling
- Central touch can be observed
- Excessive edge clearance
- May produce a +ve over-refraction
- Order steeper Base Curve



Tight / Steep Fit

- Central position
- Little movement with blink
- Central pooling
- Mid-peripheral touch
- Thin band of edge clearance
- May produce a -ve over-refraction
- Order flatter Base Curve



For any further technical advice please do not hesitate to call our Professional Services Team 01280 702002 Option 2