



MetrO² RGP

FEATURES

- automatic material selection based on lens dimensions
- every lens has oxygen transmissibility which is at least the level required by the average patient for all day wear
- computer designed aspheric periphery
- constant axial edge lift

BENEFITS

- no fitting set required
- can be fitted with confidence using 'K' readings and spectacle Rx
- maximum comfort

A high quality daily wear state of the art RGP lens with constant axial edge lift

Product Specification

Material

(automatically selected by lathe program)



Focon III 2

F2_{Low}



Focon III 3

F2_{Mid}



Focon III 4

F2_{High}

Dk (Barrers)

28

50

100

Power Range

-30.00D to +30.00D
(0.25D steps)

Order Code	Base Curve	Total Diameter
M70	7.00	8.80
M71	7.10	8.90
M72	7.20	9.00
M73	7.30	9.10
M74	7.40	9.20
M75	7.50	9.30
M76	7.60	9.40
M77	7.70	9.50
M78	7.80	9.60
M79	7.90	9.70
M80	8.00	9.80
M81	8.10	9.90
M82	8.20	10.00
M83	8.30	10.10
M84	8.40	10.20
M85	8.50	10.30
M86	8.60	10.40
M87	8.70	10.50

Material Colour

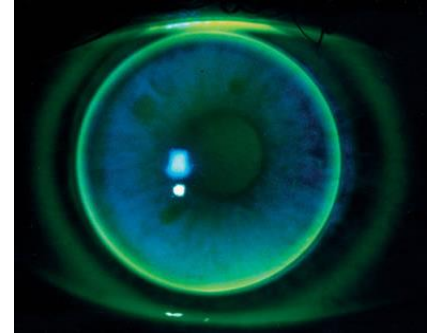
(standard) Blue
Clear
Green

FITTING PROCEDURE

- Full refraction and eye examination
- Keratometry readings
- For a spherical / near spherical cornea fit on flattest 'K'.
Adjustments should be made according to toricity of the cornea.
- Power should be ordered as Best Vision Sphere, making necessary adjustments if lens has been steepened / flattened in relation to flattest 'K'
- Instil fluorescein to check fitting

Alignment / Good Fit

- Central position – lens periphery should not extend beyond limbal area
- Smooth movement – lid lifts lens with blink, lens then falls slowly
- Good vision
- Central and mid-peripheral alignment
- Good edge clearance (approx. 0.40mm wide)



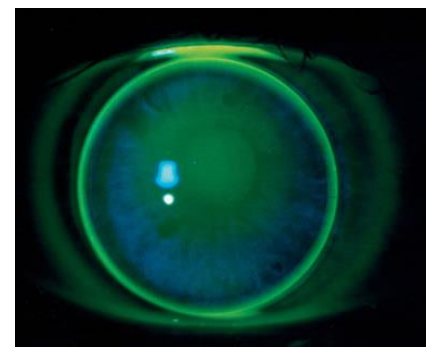
Loose / Flat Fit

- Excessive and rapid movement upon blink
- Arcuate drooping between blinks
- Lens is unstable and decentres
- If lens drops may show inferior arcuate pooling
- Central touch can be observed
- Excessive edge clearance
- May produce a +ve over refraction
- **Order steeper Base Curve**



Tight / Steep Fit

- Central position
- Little movement with blink
- Central pooling
- Mid-peripheral touch
- Thin band of edge clearance
- May produce a -ve over refraction
- **Order flatter Base Curve**



For any further technical advice please do not hesitate to call our Professional Services Team 01280 702002 Option 2